







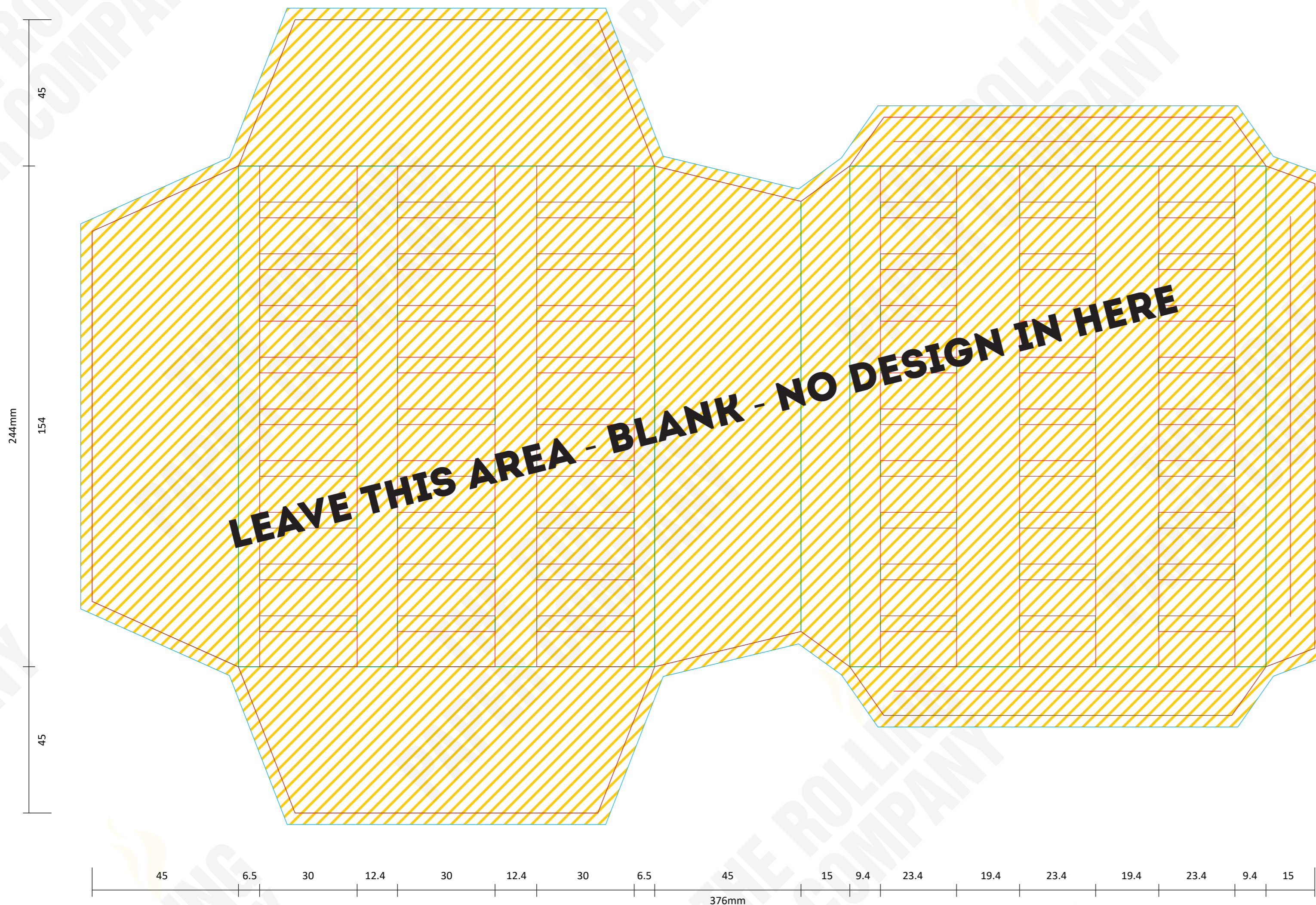
**SPECIAL INSTRUCTIONS**

**FONTS** Supply all fonts with artwork separately  
**IMAGES** All placed images must be 300dpi, 4 color process (CMYK) VECTOR, PSD, TIFF, PNG or JPG, and files must be supplied (not just embedded)  
**BLEED** All images intended to bleed must extend 30mm over the red trim lines to blue line  
**COLOURS** Convert all spot colours (on artworks layer) to CMYK  
**SPECIAL EFFECT** Add a separate layer for Foil / UV / Embossing

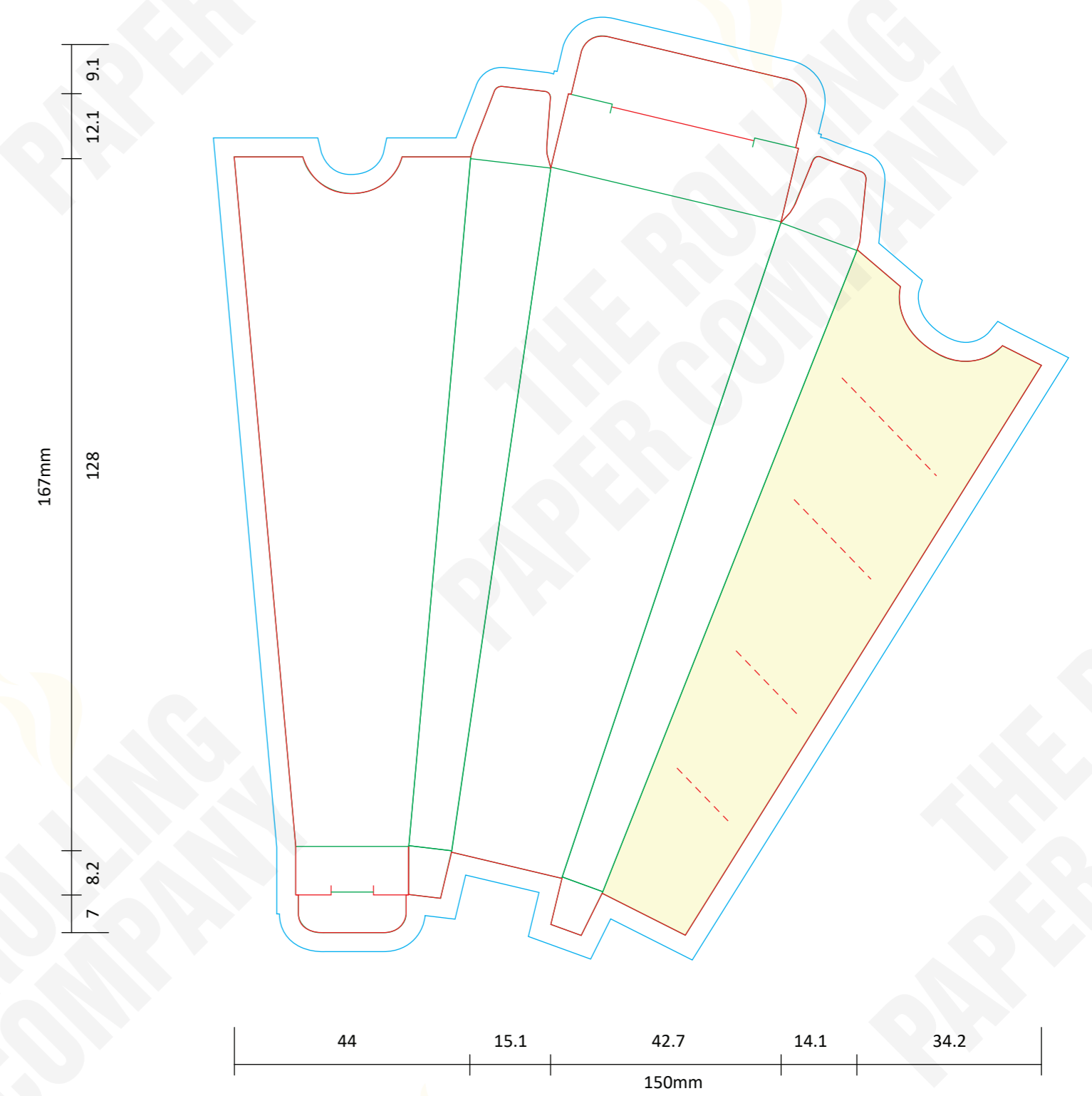
**LEGEND**

 : NOT PRINTABLE  
 : TRIM LINE  
 : BLEED AREA  
 : FOLD LINE  
 : PERFORATION  
 : GLUE AREA

**PARTITION IN INSIDE**



**3 CONES - IN PACK - 109 MM  
USE STRAW 90MM**



**DISPLAY BOX - 30 PACKS**

