

**CLIENT**  
**BRAND**  
**PRODUCT** CLEAR PAPER  
**SIZE** SKS - 40 LEAVES  
**FINISH**

**GRAPHIC DESIGNER**  
**DATE**  
**REVISION NO**

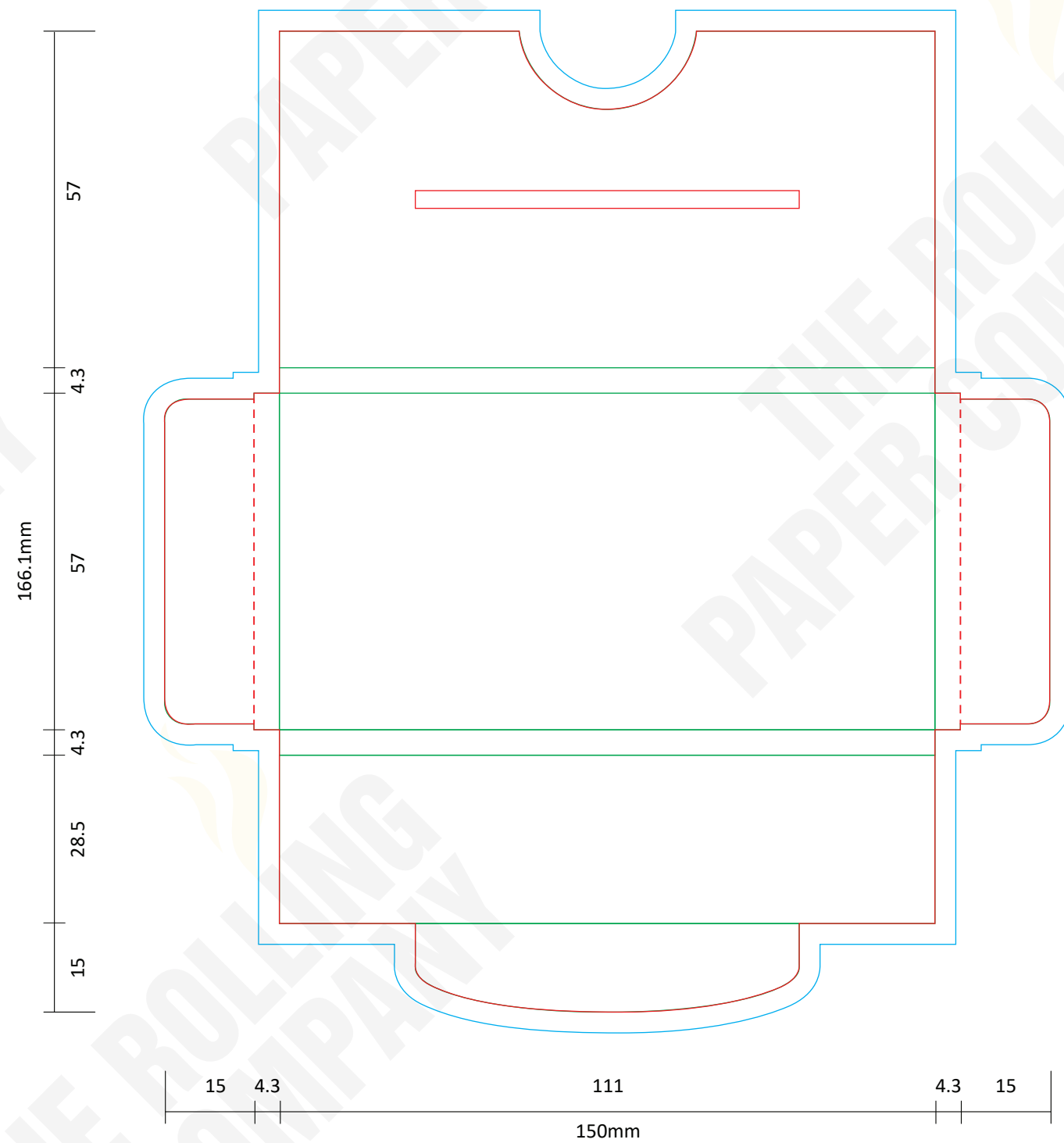
**SPECIAL INSTRUCTIONS**

**FONTS** Supply all fonts with artwork separately  
**IMAGES** All placed images must be 300dpi, 4 color process (CMYK) VECTOR, PSD, TIFF, PNG or JPG, and files must be supplied (not just embedded)  
**BLEED** All images intended to bleed must extend 30mm over the red trim lines to blue line  
**COLOURS** Convert all spot colours (on artworks layer) to CMYK  
**SPECIAL EFFECT** Add a separate layer for Foil / UV / Embossing

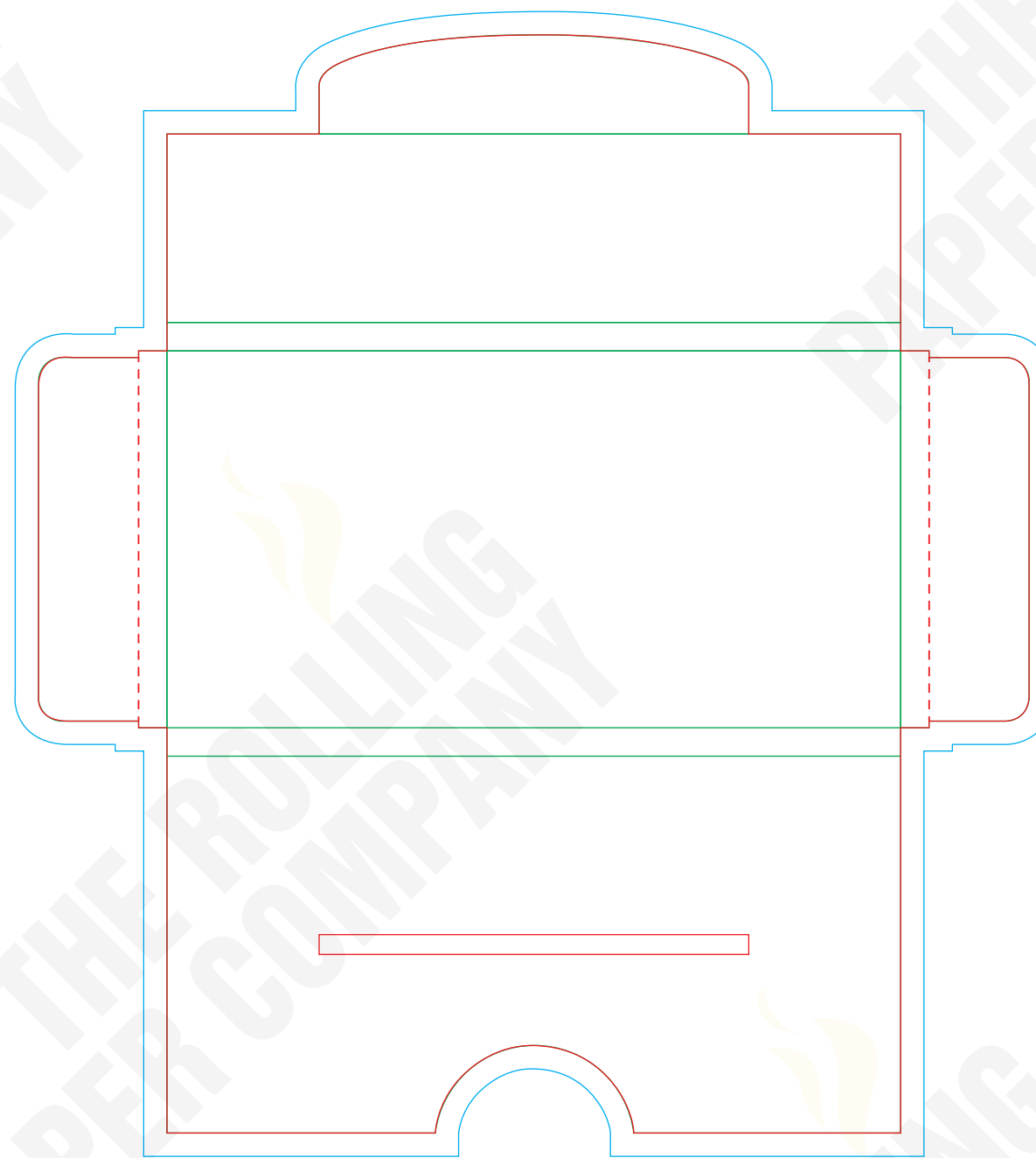
**LEGEND**

 : NOT PRINTABLE  
 : TRIM LINE  
 : BLEED AREA  
 : FOLD LINE  
 : PERFORATION  
 : GLUE AREA

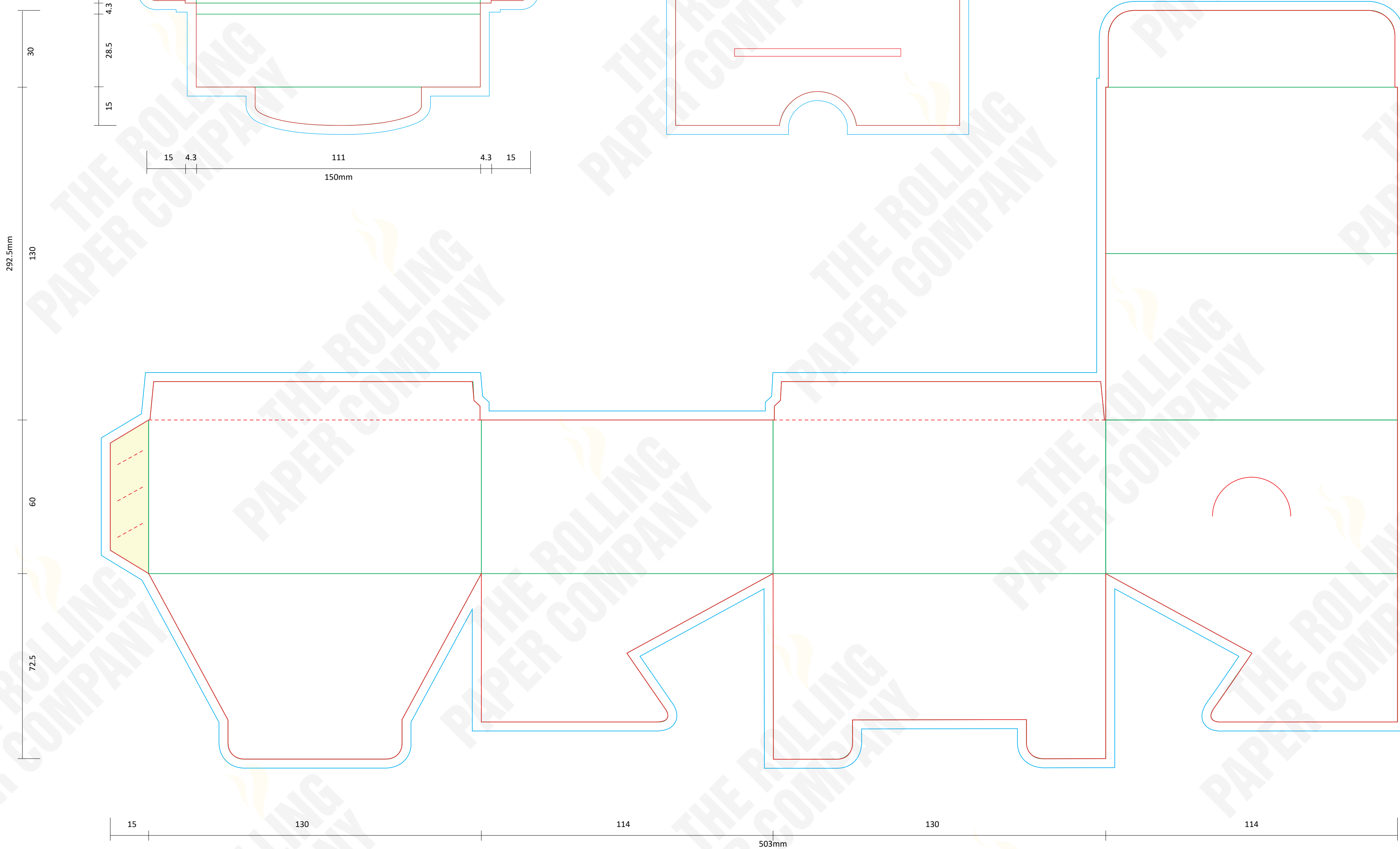
**BOOKLET OUTSIDE COVER**  
**40 SHEETS - SKS - CELLULOSE PAPERS**



**BOOKLET INSIDE COVER**  
**40 SHEETS - SKS - CELLULOSE PAPERS**



**DISPLAY BOX - 24 BOOKLETS/BOX**



**COLOURS**

**SPECIAL**