

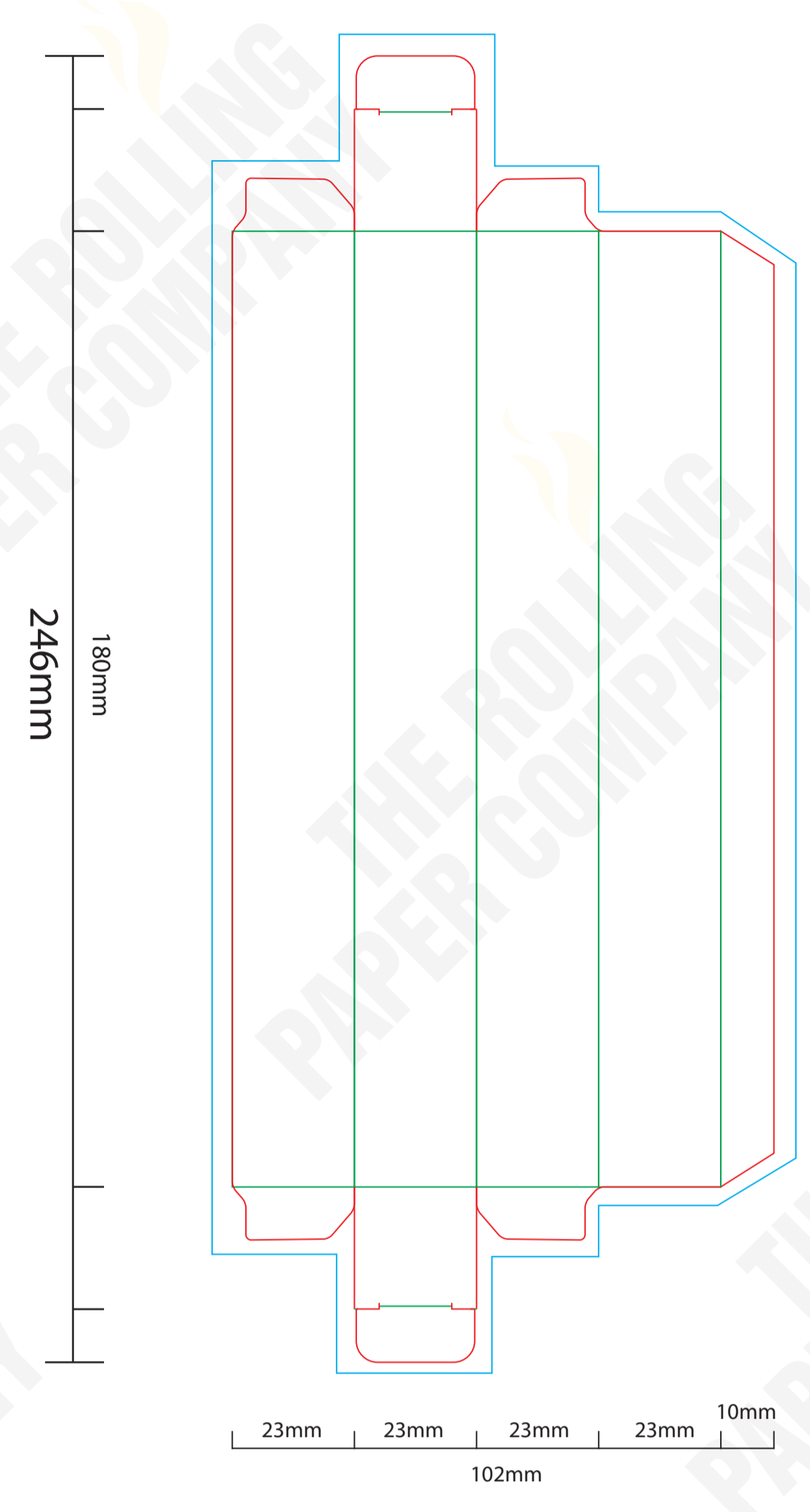


<b>CLIENT</b>		<b>GRAPHIC DESIGNER</b>	
<b>BRAND</b>		<b>DATE</b>	
<b>PRODUCT</b>	MIKA PACK	<b>REVISION NO</b>	
<b>SIZE</b>	8 CONES - 98MM - TIPS 26MM		
<b>FINISH</b>			

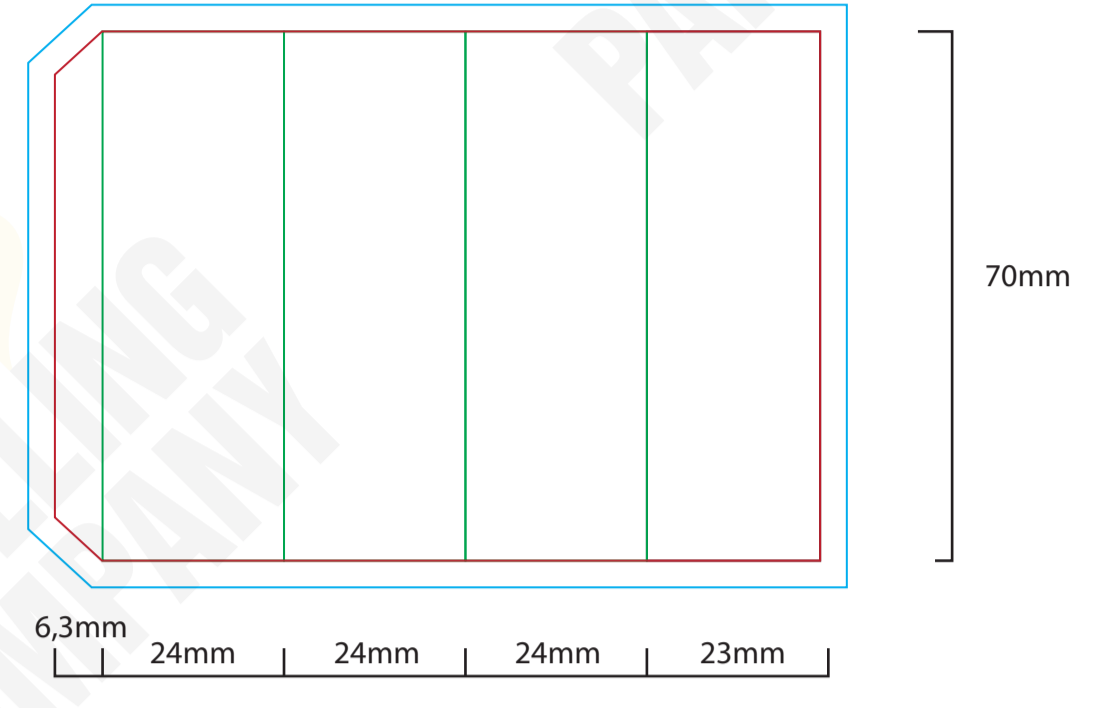
SPECIAL INSTRUCTIONS	
<b>FONTS</b>	Supply all fonts with artwork separately
<b>IMAGES</b>	All placed images must be 300dpi, 4 color process (CMYK) VECTOR, PSD, TIFF, PNG or JPG, and files must be supplied (not just embedded)
<b>BLEED</b>	All images intended to bleed must extend 30mm over the red trim lines to blue line
<b>COLOURS</b>	Convert all spot colours (on artworks layer) to CMYK
<b>SPECIAL EFFECT</b>	Add a separate layer for Foil / UV / Embossing

LEGEND	
	: NOT PRINTABLE
	: TRIM LINE
	: BLEED AREA
	: FOLD LINE
	: PERFORATION
	: GLUE AREA

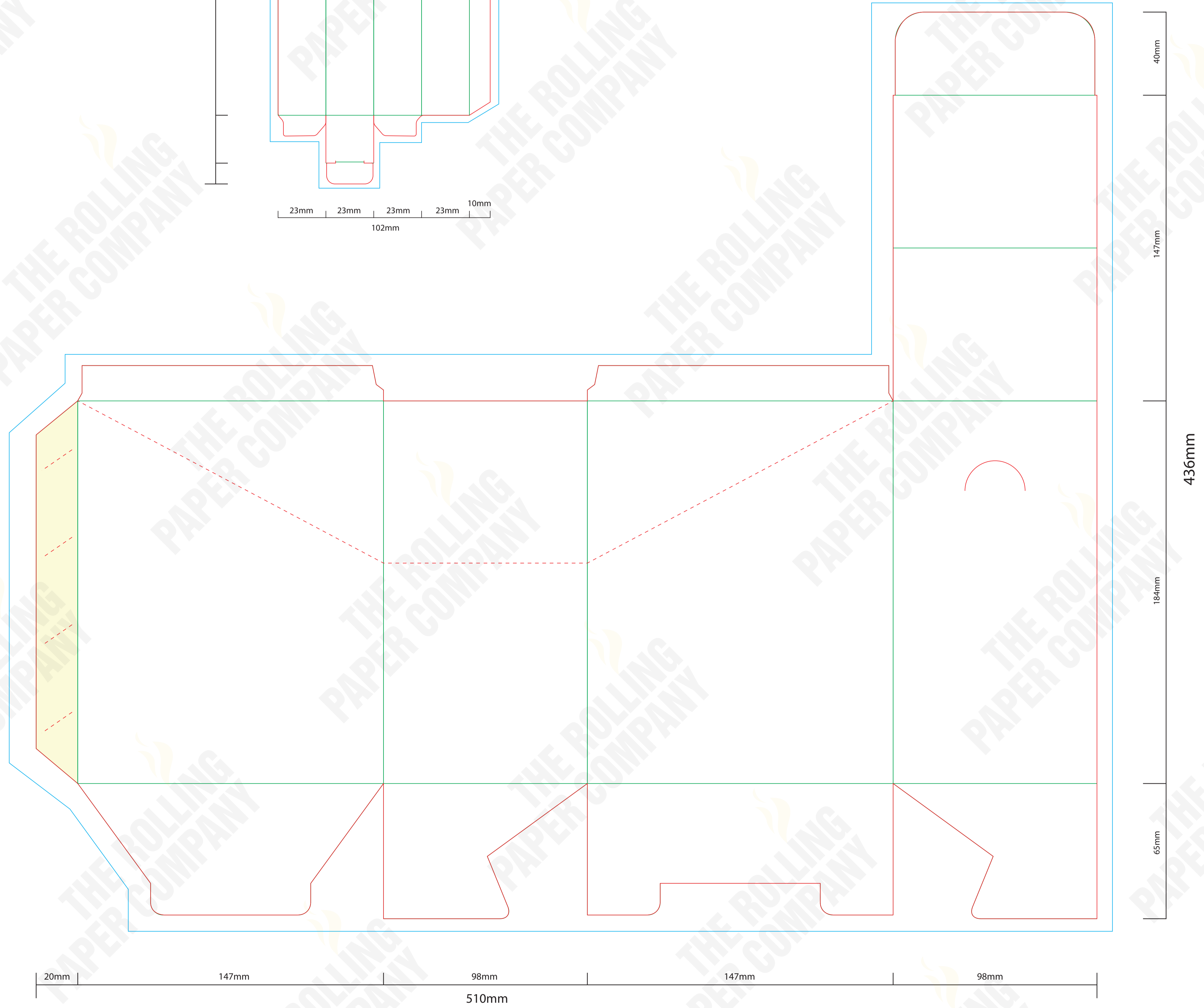
**TRANSPARENT MIKA PACK - 8 CONES**



**STICKER ON OUTSIDE TRANSPARENT MIKA PACK**



**DISPLAY BOX - 24 PACKS**



COLOURS	SPECIAL