







**CLIENT**  
**BRAND**  
**PRODUCT** ROLLING PAPERS  
**SIZE** KSS + TIPS - SELF CLOSING  
**FINISH**

**GRAPHIC DESIGNER**  
**DATE**  
**REVISION NO**

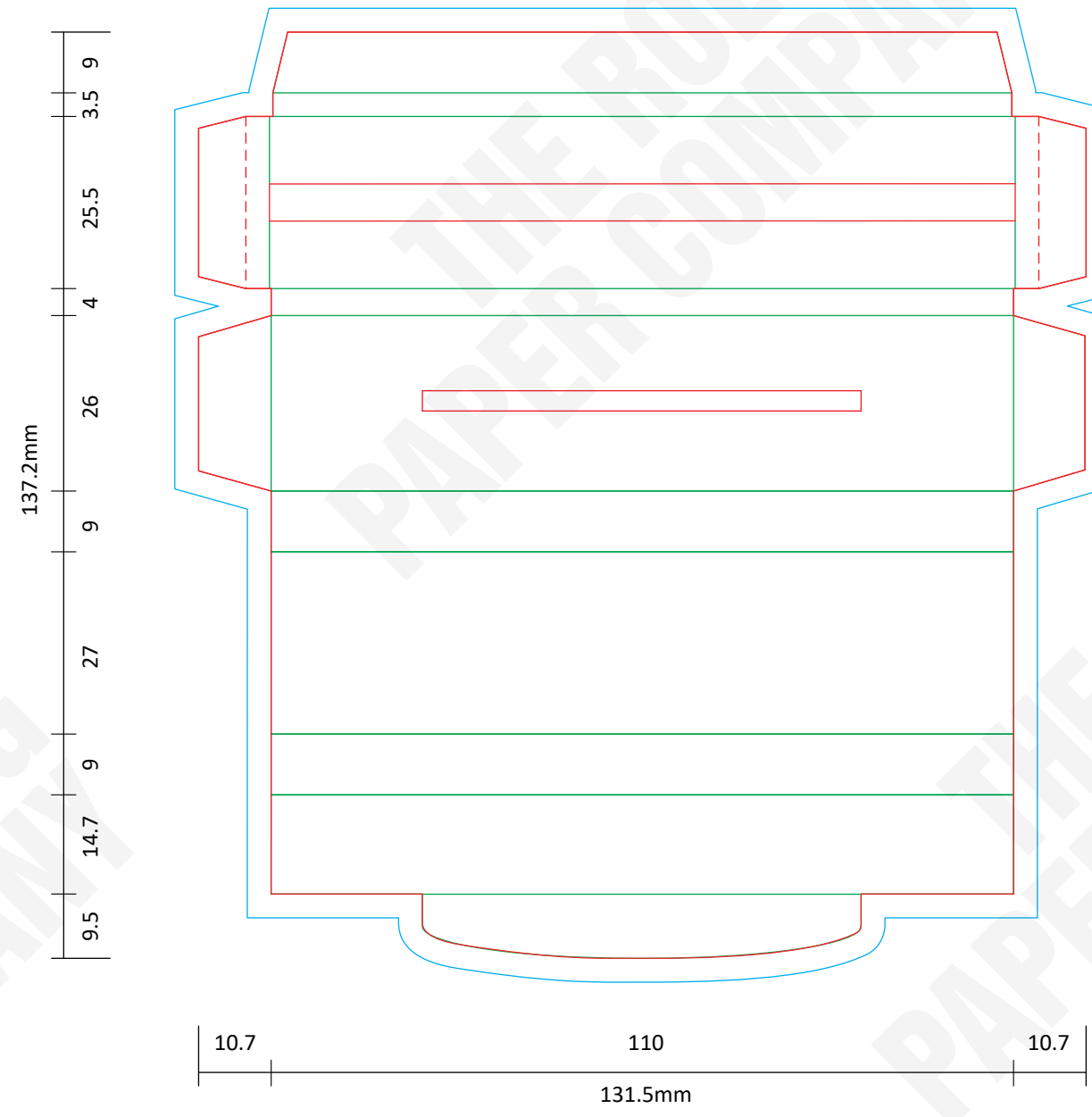
### SPECIAL INSTRUCTIONS

**FONTS** Supply all fonts with artwork separately  
**IMAGES** All placed images must be 300dpi, 4 color process (CMYK) VECTOR, PSD, TIFF, PNG or JPG, and files must be supplied (not just embedded)  
**BLEED** All images intended to bleed must extend 30mm over the red trim lines to blue line  
**COLOURS** Convert all spot colours (on artworks layer) to CMYK  
**SPECIAL EFFECT** Add a separate layer for Foil / UV / Embossing

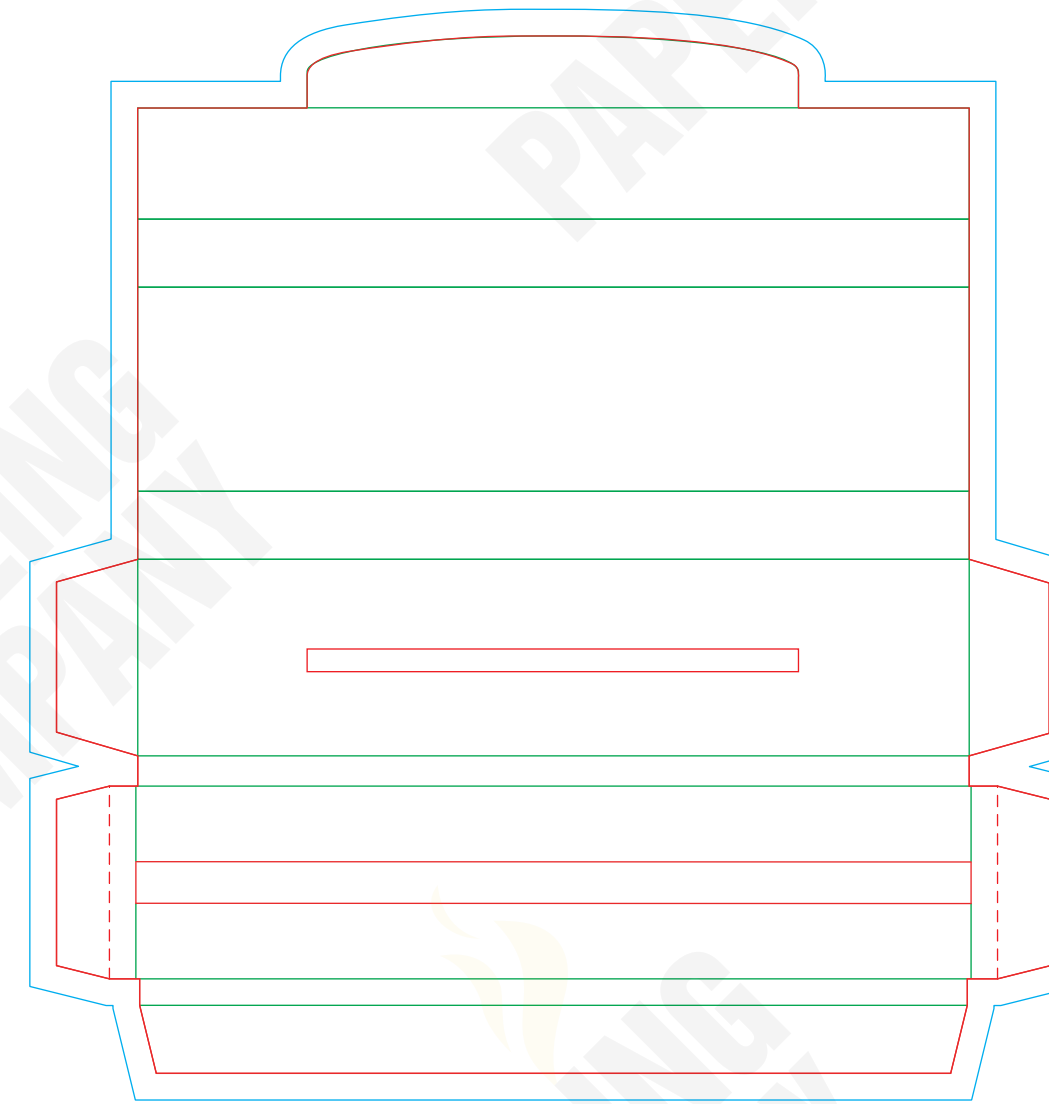
### LEGEND

 : NOT PRINTABLE  
 : TRIM LINE  
 : BLEED AREA  
 : FOLD LINE  
 : PERFORATION  
 : GLUE AREA

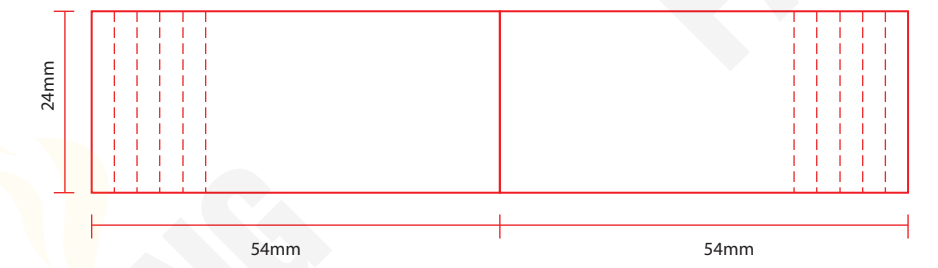
BOOKLET OUTSIDE COVER



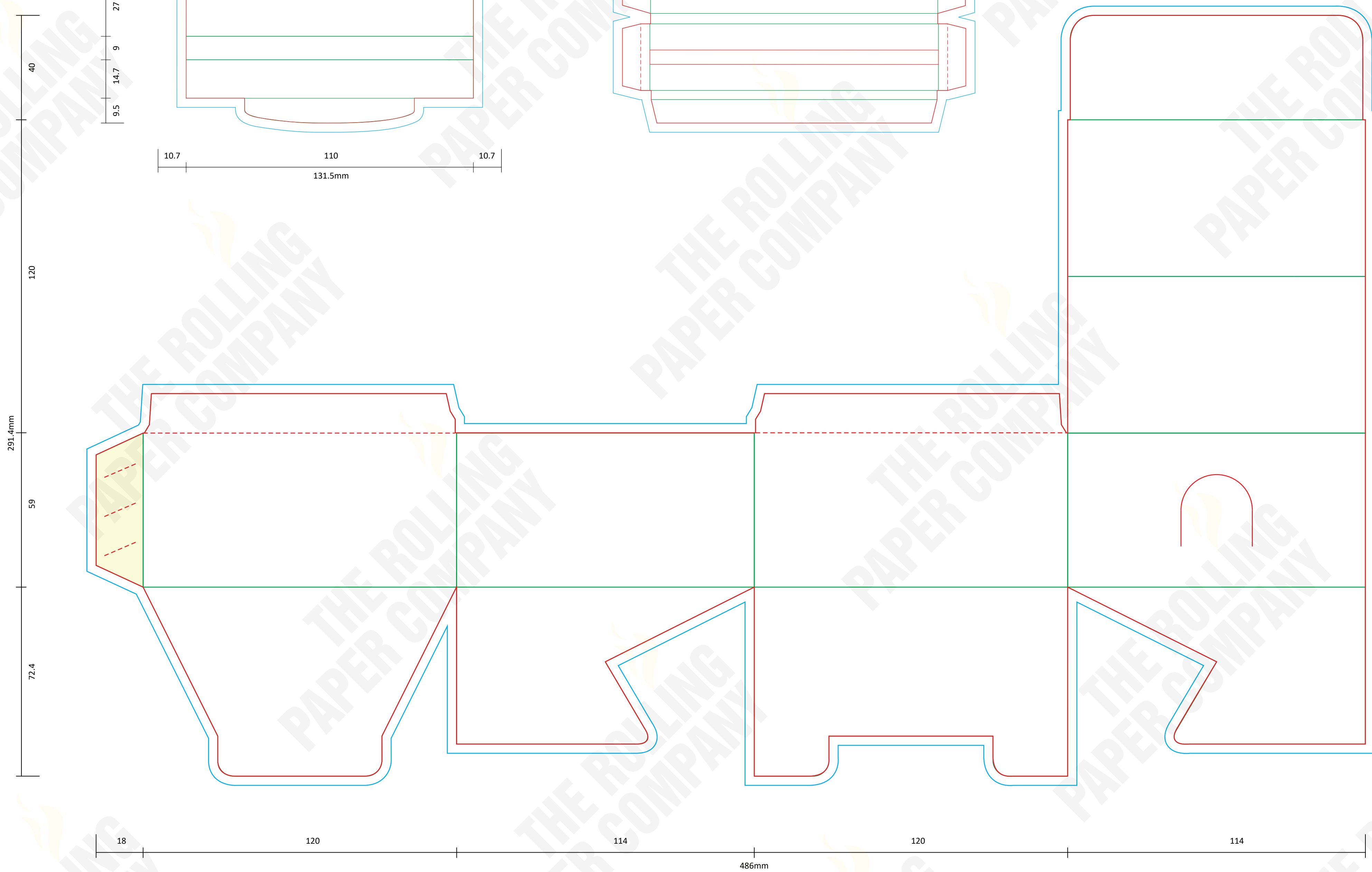
BOOKLET OUTSIDE COVER



FILTER TIPS ON BOOKLET - KSS



BOX POP DISPLAY [24 BOOKLETS/BOX]



### COLOURS

### SPECIAL

Area for defining colors and special effects.