



Company Name :
Client :
Date :
Ref. :

Please Review This Proof Carefully. Although we make every effort to ensure your artwork is correct, sometimes errors are made. It is the ***Client's Responsibility*** to inspect this proof carefully. Approving this proof in it's current form releases The Rolling Paper Company and it's vendors of any damages related to mistakes or omissions in the artwork.

Product Specifications- King Size Slim + Filters

Rolling Paper Weight: 14gsm(Lightweight) ☐ 20gsm (Mediumweight) ☐

Booklets: ☐ Glossy ☐ Matte ☐ Holographic ☐ Boxes: ☐ Glossy ☐ Matte ☐ Holographic ☐

Special Instructions:

- Fonts** : Supply fonts with artwork or convert to paths
- Images** : All placed images must be 300 dpi, 4-color process (CMYK) tif or jpg, and files must supplied (not just embedded)
- Bleeds** : All images intended to bleed must extend. 125" past the red trim lines
- Color** : Convert all spot colors (on artwork layer) to CMYK

LEGEND

Embossing : _____

Cut : _____

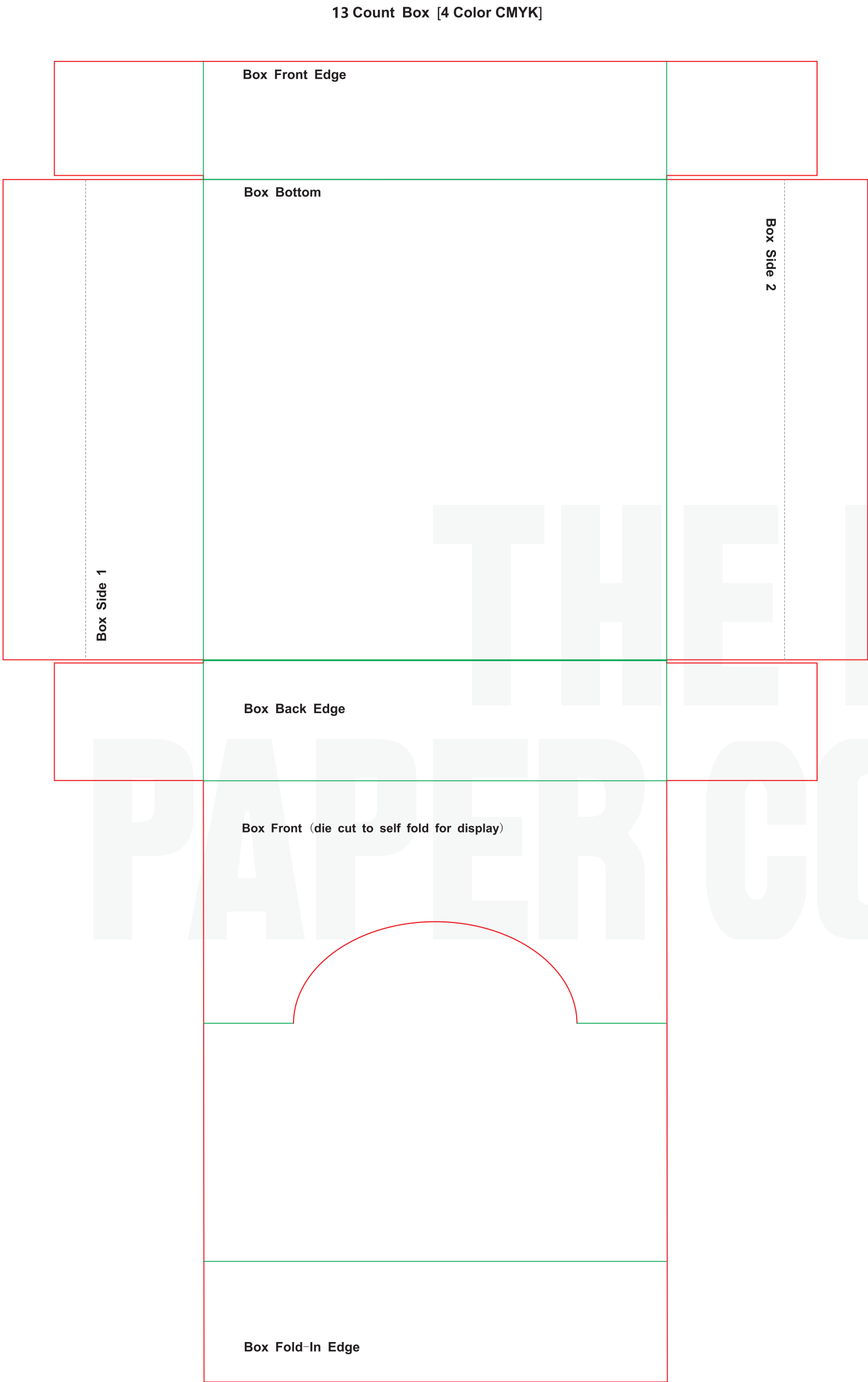
Fold : _____

Holograph : _____

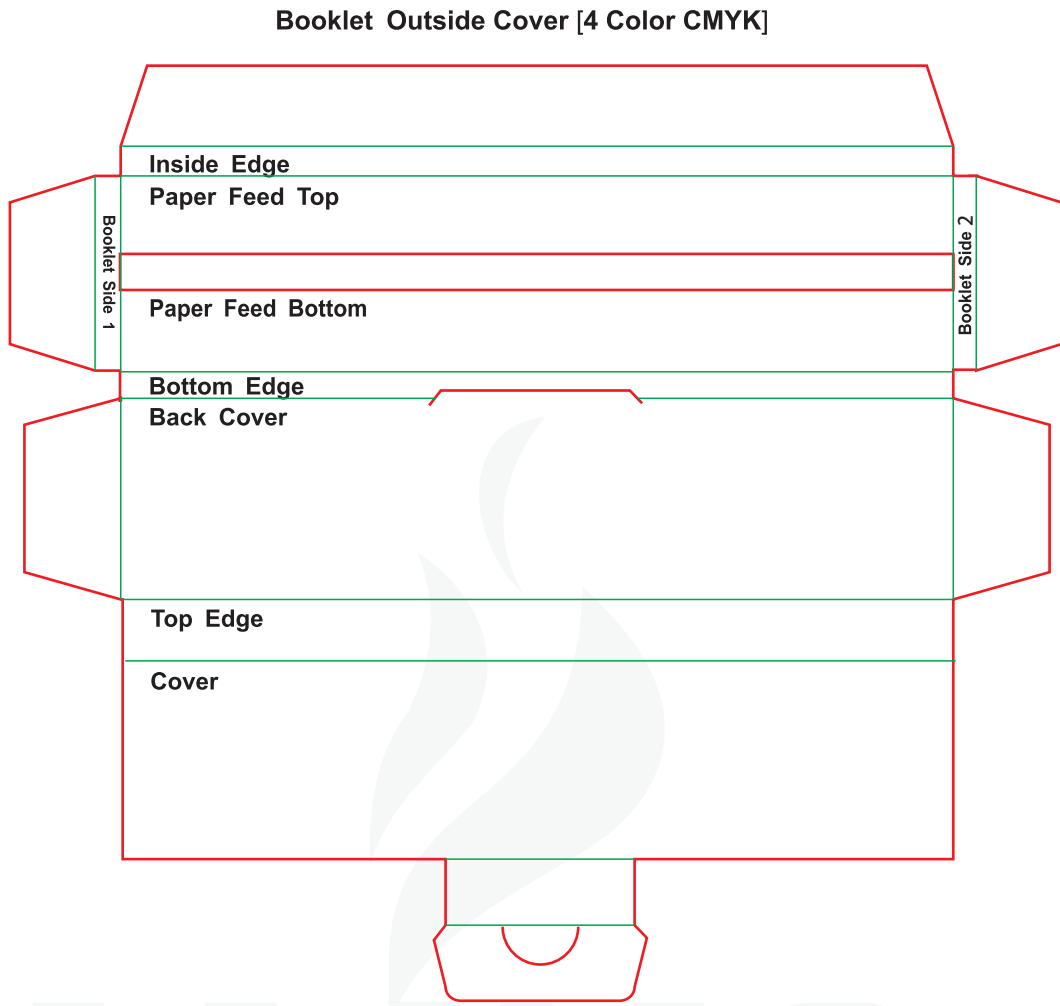
Or _____

Perforation : _____

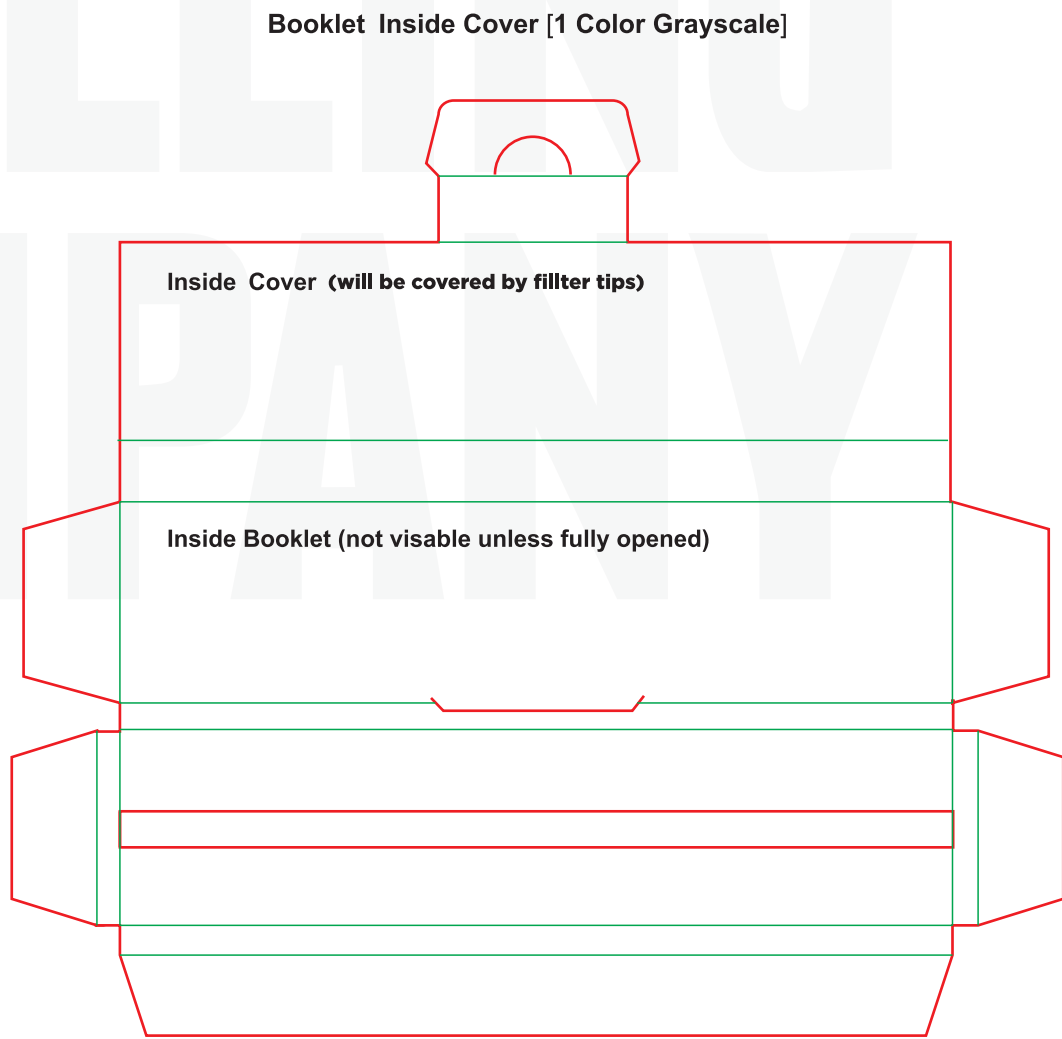
A)



B)



C)



Customer's signature