



Company Name :  
Client :  
Date :  
Ref. :

**Please Review This Proof Carefully.** Although we make every effort to ensure your artwork is correct, sometimes errors are made. It is the ***Client's Responsibility*** to inspect this proof carefully. Approving this proof in it's current form releases The Rolling Paper Company and it's vendors of any damages related to mistakes or omissions in the artwork.

Product Specifications- Single 50 leaves 100 booklet

Rolling Paper Weight: 14gsm(Lightweight) 20gsm (Mediumweight)

Booklets:

Glossy

Matte

Holographic

Boxes:

Glossy

Matte

Holographic

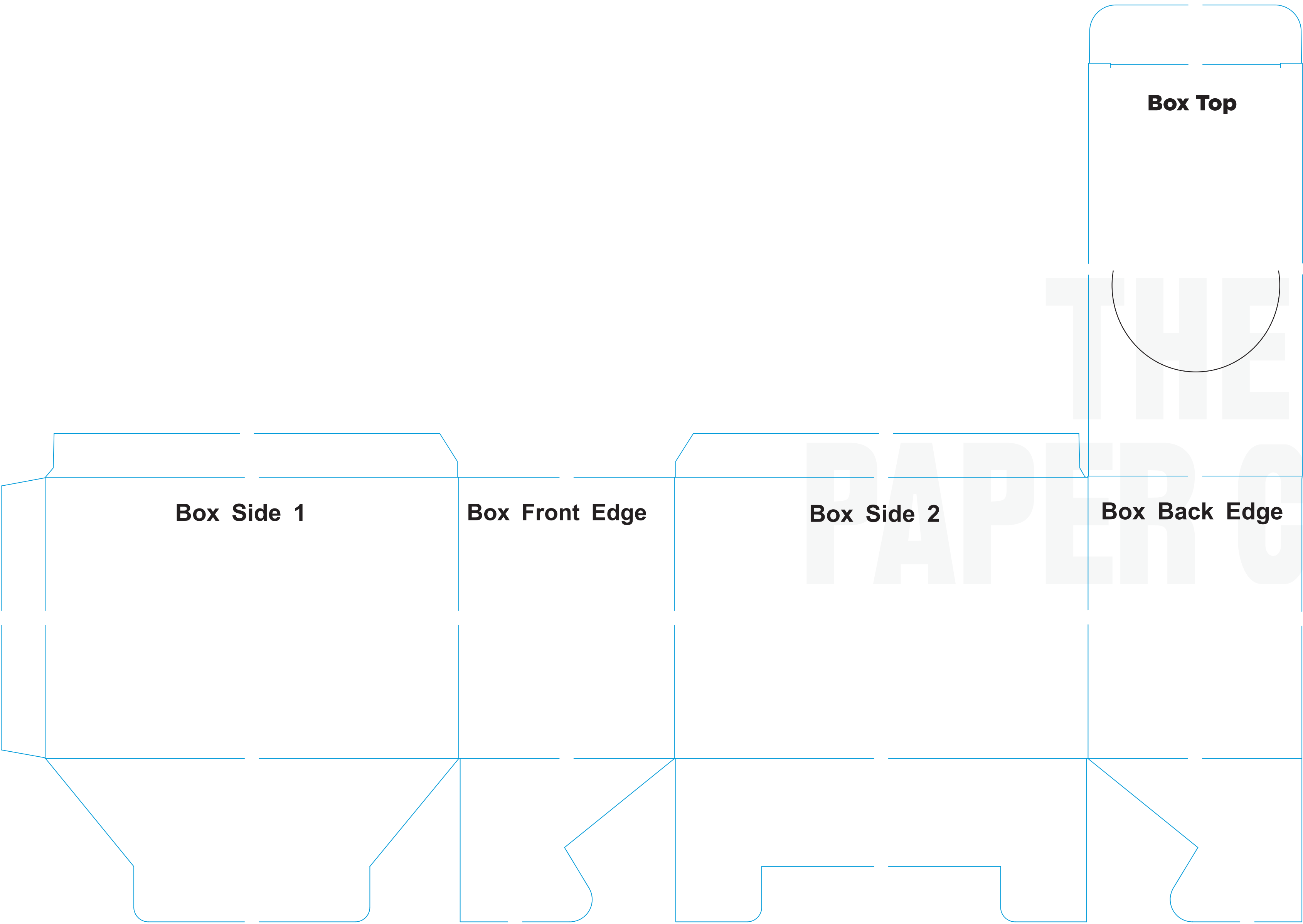
Special Instructions:

- Fonts** : Supply fonts with artwork or convert to paths
- Images** : All placed images must be 300 dpi, 4-color process (CMYK) tif or jpg, and files must supplied (not just embedded)
- Bleeds** : All images intended to bleed must extend. 125" past the red trim lines
- Color** : Convert all spot colors (on artwork layer) to CMYK

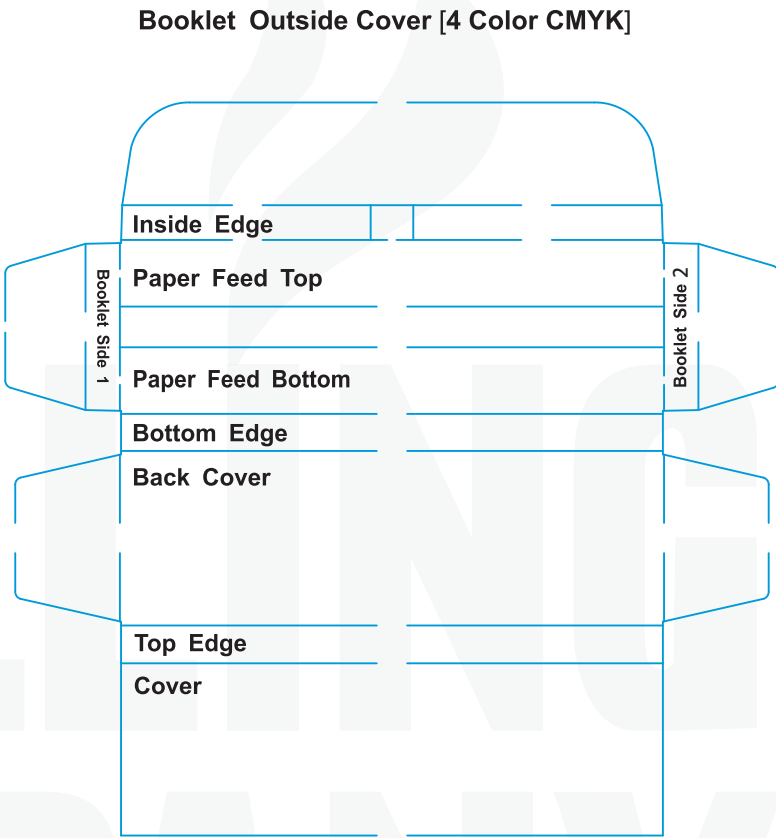
LEGEND

- Embossing** :
- Cut** :
- Fold** :
- Holograph** :
- Or
- Perforation** :

A)



B)



Customer’s signature